



**SUMMER FLOWER
& PRODUCE FAIR -
PROGRAMME
& SCHEDULE**

**Uplyme and Lyme Regis
Horticultural Society**

8th July 2023

1pm to 5pm

**at Uplyme Village Hall
and playing field**

Celebrating the Viola

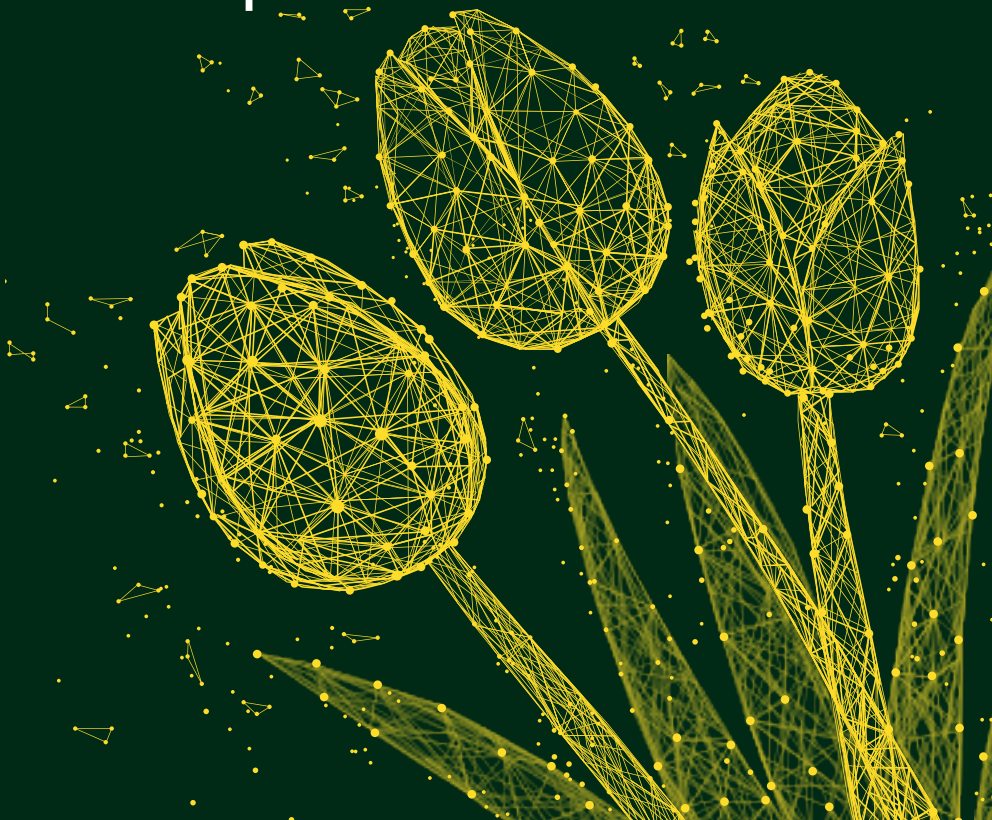
www.ulrhs.wordpress.com

Since 1858, we have been
working alongside clients to
nurture ideas and produce
outstanding property results.

How can we help you?

01297 33122

Symonds
& Sampson



PROGRAMME OF EVENTS ON SHOW DAY, SATURDAY 8th JULY 2023

8.00 am Marquee opens for receipt of competition entries

10.00 am Marquee closes for judging to begin

Programme of Entertainment

1.00 pm SHOW OPENS with the Choir of Mrs Ethelston's School

Throughout the afternoon:

- Show Marquee open to the public.
- Science and Magic Shows by Strawberry Jam Entertainment.
- Foxdown Small Animal Farm. Little Orchard Alpacas.
- A variety of stalls to browse and find something different.
- Demonstrations include: JK Willow weaving, Observation Bee Hive, Woodturners, Rousdon Spinners, All Saints Patchwork & Quilting, Dorset Wildlife Trust, Axe Valley Conservation Society.
- Family Fun Dog Show.
- Cream Teas and Light refreshments served in the Village Hall.

1.15pm Family Fun Dog Show Registration. Open to all.
See page 33.

1.45pm Take Too - Guitar and Sax Duo

2.00 pm Family Fun Dog Show Competition begins
Strawberry Jam Science Show

2.30 pm Lyme School of Ballet

3.00 pm Strawberry Jam Science Show

3.15pm Take Too - Guitar and Sax Duo

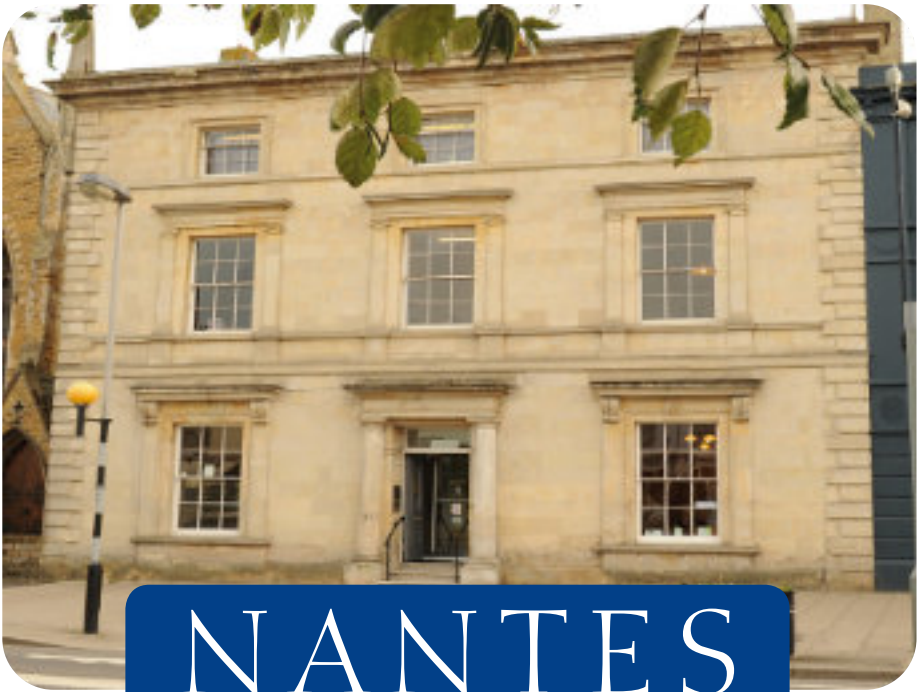
4.00 pm Lyme School of Ballet
Strawberry Jam Magic Show

4.30 pm Presentation of Awards

5.00 pm The Show Closes

**Exhibits may not be removed before 5pm.
Programme subject to change**

LEGAL ADVICE IN PLAIN ENGLISH



NANTES

Solicitors & Notaries

Bridport, Dorchester, Portland & Weymouth

01308 422313

www.nantes.co.uk

SHOW COORDINATOR'S WELCOME

Dear Friends and Members,

Welcome to the 2023 Summer Flower and Produce Show, the 94th Show organised by the Uplyme and Lyme Regis Horticultural Society. This year we are celebrating the Viola – cheerful, edible and hardy, with a long flowering season from early summer to early autumn - featured in several of the show classes, we are hoping that everyone will take part. Entries are free, the show classes and rules are found in this schedule and on our website.

Last year, under the able stewardship of Fiona Walker, we returned to our first full show since Covid. With a high standard of entries in the marquee, excellent entertainment and stalls on the field, we were able to make donations to The Woodland Trust, Uplyme United Charities and Axminster Headlight – our thanks to Fiona for her sterling work, together with the committee and a considerable number of our members who helped to make the show a success.

In 2023 we hope to support The Flamingo Pool in Axminster and The Woodroffe School Gardening Club.

As usual the Show will run from 1pm to 5pm, with the Prize presentation at 4:30. As well as our traditional marquee full of show entries we welcome plant and artisan stallholders, a range of entertainments, a dog show and children's activities. In the Village hall excellent refreshments will be available, alongside the Craft and Photography entries plus demonstrations from Rousdon Spinners and All Saints Patchwork and Quilting Group. Other highlights include Potato in a Bucket, Alpacas, Small animal farm, Observation Bee Hive, Bouncy castle, Pimm's and Prosecco bar and much more. Plenty for all the family to enjoy throughout the afternoon.

I would like to thank all the committee members and friends that have given their time and energy to organise the 2023 programme of shows, talks and trips. If you'd like to get involved, talk to any Committee member or look at our website www.ulrhs.wordpress.com.

Best wishes,

Jenny Harding

Show Coordinator



Nothing much has changed since we made our delicious preserves in Uplyme.



We are delighted to supply our jam to make the show teas extra scrumptious.

Available at Uplyme Post Office

THURSDAY COTTAGE LTD, TREWLANDS FARM, TIPTREE, COLCHESTER, ESSEX, CO5 0RF
WWW.THURSDAY-COTTAGE.COM



FINISHING TOUCH

— Hairdressing Salon —

Lovin' the Hair

18 Church Street Lyme Regis DT7 3DB
01297 445323


Tuesday - Friday 9am - 5pm
Saturday 9am - 1pm Closed Mondays


Trophy and Award Winners 2022

RHS Banksian Medal	Bill Howarth
Worshipful Company of Gardeners Diploma	Jeff Matthews
Seamark Cup	Bill Howarth
Mrs J Thomas Cup (Best exhibit from a Junior)	Mrs Ethelston's School
McLeod Innes Cup	Jill Stapleforth
Tony Cook Tankard	Neil Croton
J & F J Baker Cup	Charlie McCormick
Bullock Cup (Best exhibit from a Junior)	Nathaniel Croton
Thompson Tankard	John Wood
Cakemakers Cup	Jewel Foord
Diamond Jubilee Cup	Adrienne Bonwick
Llewellyn White Cup	Christine Taylor
Diana Bridges Cup	Neil Croton
Leslie Bretherick Cup	Ruth Jordan
Junior Photo Cup	Horatio Lawrence
Raff Bint Cup	Rachel Heighway & Tiggy
Dahlia Trophy	Carol Stickler
Woodroffe Challenge Cup	Bill Howarth
Ian Stobo Memorial Trophy (Best Newcomer)	Charlie McCormick
Williams Challenge Cup	Bill Howarth
Dorothy & Fred Stevens Memorial Cup (Best Newcomer)	Rachel Sykes
Winemakers Cup	Rob Harvey
Mary Frings Challenge Cup	Henriette Wood
Morrish Challenge Cup	Henriette Wood
Cartwright Challenge Cup	Anita Routley
Mrs Rex Woodroffe Challenge Cup	Neil Croton
Shilton Cup	Ruth Jordan & Anita Routley
Wilson Cup	Alba Wills
Lindsey Jenkin Carter Cup	Jackson & Grace
De La Mare Cup	Rachel Heighway & Tiggy
Potato in a Bucket – Best Yield	Tony Hill
Potato in a Bucket – Best Quality	Seth Buller
Potato in a Bucket – Best Yield Junior	Seth Buller




Artisan Coffee Shop Serving
Coffee | Cake
Brunch | Lunch

 @giantsandidols

 @amid_giants_and_idols

 07898074305

 59 Silver Street, DT7 3HR



10% OFF

**PLANTS, SEEDS, BULBS & GARDENING PRODUCTS
WITH YOUR GARDEN CLUB CARD**

Established 1866

150 years growing in Dorset

Groves Nurseries, West Bay Road, Bridport 01308 422654

Little Groves, Tunnel Road, Beaminster 01308 862030

grovesnurseries.co.uk

AWARDS AND TROPHIES

AWARDS

The Royal Horticultural Society's Banksian Medal is presented to the winner of the highest number of points in the Horticultural Classes (1-65). Competitors who won the medal in 2021 and 2022 are not eligible to win it in 2023.

The Worshipful Company of Gardeners Show Award is a diploma for best Flowering Plant.

TROPHIES

These Trophies are offered for the **best exhibit** in the following classes:

Seamark Cup	Flowers and Foliage (1-32)
Mrs J Thomas Cup (Best exhibit from a Junior Entrant)	Flowers and Foliage (1-32)
McLeod Innes Cup	Specimen Rose (2)
Tony Cook Tankard	Sweet Peas (5-6)
Dahlia Trophy	Dahlias (8-9)
J & FJ Baker Cup	Fruit and Vegetables (33-65)
Bullock Cup (Best exhibit from a Junior Entrant)	Fruit and Vegetables (33-65)
Thompson Tankard	Home-made Wine (70-79)
Cakemakers Cup	Cookery – set recipe (109)
Diamond Jubilee Cup	Craft (110-119)
Llewellyn White Cup (Newcomers award)	Floral Art (120)
Diana Bridges Cup	Open Floral Art (121-125)
Leslie Bretherick Cup	Photography (126-132)
Junior Photo Cup	Junior photography (133-135)
Raff Bint Cup – Best Trick	Family Dog Show (8)

These Trophies are offered for competition on **points** (see Rule 12).

Each 1st Prize counts 10 points (Collections 20 points);

2nd Prize 6 points (Collections 12 points);

3rd Prize 4 points Collections 8 points).

In recognition of the absence of entry fees there will be no cash prizes.



Enjoy 10% off breakfast or lunch at the River Cottage Kitchen & Store when you present this advert



River Cottage HQ, Park Farm, Trinity Hill Road, Devon, EX13 8TB
www.rivercottage.net 01297 630300

*Offer valid until 31st December 2021



Voted the Nations Favourite Public Garden 2021 and recently featured on Gardeners World

Open Daily from 10am–5pm. Dalwood, Axminster, EX13 7ET

www.burrowfarmgardens.co.uk

Continued from page 9...

Woodroffe Challenge Cup	Flowers and Foliage (1-32)
Ian Stobo Memorial Trophy (Newcomers award)	Flowers and Foliage (1-32)
Williams Challenge Cup	Fruit and Vegetables (33-65)
Dorothy & Fred Stevens Memorial Cup (Newcomers award)	Fruit and Vegetables (33-65)
Winemakers Cup	Home-made Wine (70-79)
Mary Frings Challenge Cup	Preserves (80-90)
Morrish Challenge Cup	Home Produce (80-109)
Cartwright Challenge Cup	Craft (110-119)
Mrs Rex Woodroffe Challenge Cup	Floral Art (121-125)
Shilton Cup	Photography (126-132)
Wilson Cup	Juniors up to 7 yrs.(136,137-138)
Lindsey Jenkin-Carter Cup	Juniors 7-16 yrs.(136,139-142)
De la Mare Cup	Family Dog Show (1-7)

Winners of cups and trophies are requested to clean and return them to a member of the Horticultural Society Committee before or at the Plant Sale in May 2024. Thank you

Potato in a Bucket

One potato tuber, grown in a numbered container, both of which will have been supplied by the Committee.

The numbered container and potato were available for purchase (£3.00) at the Coffee Morning on 11th February.
No other containers are acceptable.

Potato containers to be emptied at the show and judged for **two prizes** based on a) quality and b) weight.
Prizes (£50 River Cottage voucher) kindly donated by River Cottage. www.rivercottage.net

Plus a **prize** for the best entry from a Junior(16 & under).
Prize kindly donated by WBW Solicitors LLP wbw.co.uk

For your show entry form, please turn to page 42.



Half page space reserved
For Axminster Printing

SHOW RULES (please read carefully)

1. Entries close at **8pm** on Wednesday, 5th July 2023.
2. All exhibits must be the property of the exhibitor. For the Flowers & Foliage (classes 1-32), Fruit & Vegetables (classes 33-65), Egg (class 69) and the Junior Gardener (class 136) sections, the exhibitor must have cultivated all fruit, vegetables, and flowers, and produced eggs from their own hens. This does not apply to any of the other classes including the Floral Art section. Pot plants must have been in the exhibitor's possession for at least two months.
3. Class Cards will be available on the morning of the Show and exhibitors will be responsible for the correct placing of the cards. Nothing may be written by exhibitors on Class Cards, except variety names (under "Description").
4. Exhibitors must provide their own receptacles unless otherwise stated.
5. No exhibitor may enter more than one exhibit in any one class.
6. The marquee will be open at 8.00 am. **Exhibits must be in place and exhibitors must leave the marquee by 10.00 am.** Late arrival of exhibits will not be accepted. Exhibits cannot be removed before 5:00pm. **No Cars on the field until after 5.00pm please.**
7. Judging in the Horticultural Section will be conducted according to Royal Horticultural Society Rules. A copy of the RHS Handbook is available at the Chief Steward's desk. Judges may withhold a prize at their discretion or give an award according to the merit of the exhibit.
8. Any objections must be made in writing to the Secretary of the Society on the day of the Show.
9. While taking every reasonable care, the Committee cannot hold itself responsible for any loss or damage to exhibits.
10. Any question or dispute arising not covered by these Show Rules shall be settled by the Committee whose decision shall be final.
11. Any young person under the age of 16 on 8th July 2023 may enter any adult classes. Exhibits will be judged together with the adult entries for the adult prizes, but awards will be made for the best exhibit by a Junior in each of the Flowers & Foliage and Fruit & Vegetable groups.
12. No Cup offered for competition on points shall be awarded to the same competitor more than three times running. Cups and sponsored prizes will not be presented to those residing outside a 15-mile radius of Uplyme Village Hall; in both cases a certificate may be awarded instead. **Newcomer Awards** will be made to the best score in each of the Flowers & Foliage and Fruit & Vegetable classes by new exhibitors and those who have never won a trophy on points at this Society's Summer Show.
13. An entry form may only be used by a single entrant. Extra entry forms for additional entrants can be downloaded from our website (www.ulrhs.wordpress.com) or photocopied.

Mike Ebdon Electrician

For all your Electrical needs.

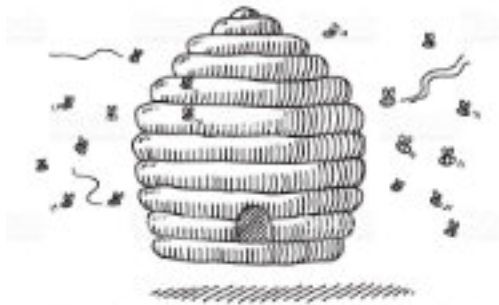
Roseneath, Venlake Lane, Uplyme, Devon DT7 3SD

Home: 01297 442861 Mobile: 07774642740



FREE ESTIMATES All work Part P certified

Bard's Bees



Local raw honey and other hive products
from our own beehives. Available from our home;
Phone: 01460 221698 - Delivery available

NOTES FOR EXHIBITORS

Please read the schedule carefully, including weight, size and number specified in each class. Judges do check!

- 1. Flowers:** Condition is very important, try to pick as late as possible, and keep in cold water in a cool place until ready for staging. Remove any seed-heads or side buds if a single bloom is asked for and remove any foliage that is damaged or marked.
- 2. Fruit and Vegetables:** These should be displayed either on a white plate, directly on the table or as specified in the particular class.
- 3.** Specimens should be as identical as possible in size, shape and colour; they should be clean and look fresh. Stalks should be intact and cut from the plant with scissors. Wash roots gently, do not scrub.
- 4.** Beans should be straight, have no outward sign of seeds and some stalk left on.
- 5.** Courgettes should ideally have the flower intact.
- 6.** Carrots and beetroot should have their foliage trimmed to 3 ins (7.5cms).
- 7.** Leeks should have foliage intact, with roots untrimmed but washed free of soil.
- 8.** Tomatoes should be firm but ripe, with calyx (stalk) intact.
- 9.** Onions should have the roots trimmed to the basal plate, and necks folded and tied neatly with raffia.
- 10.** Soft fruit should be displayed on a white plate, with currants on their strigs and berries with stalks.

The Secretary has the RHS Show Handbook containing advice on growing and showing, which can be consulted on request.

JUDGES

Flowers & Foliage.....	Leslie Tuthill
Fruit & Vegetables.....	Nigel Ball
Floral Art.....	TBC
Preserves & Honey.....	Jo Neave
Cookery.....	Paula Wyon Brown & Adrian Clark
Wine.....	John Smith
Craft.....	Jane Rudkin
Junior Section.....	Sarah Cooke
Photography.....	Andy Neal
Fun Classes.....	all to be judged by public vote

PINHAY HOUSE CARE HOME



"your home from home by the sea"

Spacious rooms, in a beautiful house, in a glorious part of Devon



We are Dementia Care Specialists

Tel: 01297 445626

Email: info@pinhayhouse.co.uk

www.pinhayhouse.co.uk

HORTICULTURAL SECTION

Flowers and Foliage

See Exhibitors Notes (page 15) and Show Rules (page 13). Exhibit variety should be named if possible. To be shown in one container unless otherwise stated.

1. Roses large flowered, one or more varieties 3 blooms
2. Rose 1 specimen bloom
3. Rose, clustered flowered 1 spray
4. Rose for a buttonhole - foil wrapped but standing in water
5. Sweet Peas (annual) 7 stems
6. Sweet Peas (annual) 3 stems, each of a different variety
7. Penstemons 3 stems
8. Dahlias, one or more varieties 3 blooms
9. Dahlia 1 specimen bloom
10. Hydrangeas, lacecap 3 blooms
11. Hydrangeas, mophead 3 blooms
12. Marigolds 5 stems
13. Calendulas 5 stems
14. Pinks 3 stems, one or more varieties
15. Violas 5 blooms, displayed in a box (supplied)
16. Pansies 5 blooms, displayed in a box (supplied)
17. Lavender 7 stems
18. A single flower stem - any kind not listed above
19. Annuals or Biennials, excluding Sweet Peas 5 stems, one or more kinds
20. Perennials (not shrubs, bulbs, corms or tubers) 5 stems, one or more kinds
21. Mixed flowers 7 stems, at least two kinds
22. Insect friendly flowers - at least three kinds
23. Trees or shrubs, flowering 3 stems, one kind
24. Trees or shrubs, foliage 3 stems, three distinct kinds
25. Fuchsia any size pot
26. Orchid any size pot
27. Any other pot plant, flowering 15cm max. diameter
28. Any other pot plant, flowering 15cm and over (60cm max diameter)
29. Pot plant, foliage 25cm max. diameter
30. One Cactus or Succulent any size pot
31. Collection of cacti or succulents shown in 3 separate pots
32. A Viola grown from a plug plant distributed at the March monthly meeting. Any size pot. Plug plant supplied by Groves Nursery.



MARTIN DIPLOCK
CHARTERED SURVEYORS

Chartered Surveyors, Estate Agents & Valuers
Based in Lyme Regis and covering East Devon and
West Dorset

36 Broad Street, Lyme Regis DT7 3QF
01297 445500 post@martindiplock.co.uk
www.martindiplock.co.uk

We wish great success to all the
competitors and to the
Uplyme & Lyme Regis
Horticultural Society for their
2023 Summer Show.

Fruit and Vegetables

*Exhibit variety named if possible. Classes marked * one variety only.*

33. Soft fruit, 2 kinds, approx. 125g of each, displayed on one plate (see note 10)
34. *Soft fruit, one kind, approx. 125g (see note 10)
35. *Gooseberries 7 with stalks
36. *Blackcurrants 5 strigs
37. *Any other fruit
38. *Potatoes, white 5
39. *Potatoes, coloured 5
40. Heaviest potato 1
41. *Salad Potatoes 7
42. *Onion 1 trimmed (over 250g)
43. *Onions 3 trimmed (each 250g or under)
44. *Shallots 5
45. *Garlic 3 bulbs
46. *Peas 5 pods
47. *Peas, mangetout or snap 5 pods
48. *French Beans, dwarf or climbing 5 pods
49. *Broad Beans 5 pods
50. *Runner Beans 5 pods
51. *Cucumber 1
52. *Rhubarb 3 sticks (pulled) top foliage trimmed to 7.5cm.
53. *Courgettes, long, a pair (10-20cm - measured without flower)
54. *Beetroot 3
55. *Tomatoes 3
56. *Tomatoes, cherry or small-fruited variety 7 (max. 3.5cm diameter)
57. *Carrots, long, round or stump-rooted 3
58. *Salad radishes 3
59. *Lettuce 1
60. *Any kind of vegetable not listed above
61. *Parsley 3 stems in water
62. Cut culinary herbs, except parsley 3 kinds in water, named, not in flower or bud
63. Assortment of flowering herbs, attractive to butterflies 5 different stems in water named
64. Kitchen Garden Collection, a trug or basket of mixed produce, judged on quality, variety and presentation
65. Collection of 3 kinds of salad vegetables, in one container (eg. basket, platter or tray)

Find everything on your garden wish list at **Otter Garden Centres**



Enjoy the very best of gardening,
home and leisure at one of our
7 family-run garden centres.

Find top quality home-grown plants from
our nurseries, shop our wide range of
products and relax in one of our coffee shops.

Ottery St Mary - Wincanton
Plymouth - Torbay - Bishopsteignton - Lymington - Taunton

www.ottergardencentres.com

Proud to
support the
Uplyme & Lyme
Summer
Show



Fun Classes

Judged by public vote. Pre-entry is not necessary – just bring your entries to the marquee by 10am

- 66. Rose, 1 bloom to be judged for fragrance.
- 67. A Viola made from paper
- 68. 'Floating Floral Display' in a container max 25cm diameter

Egg Class

The egg class is judged on appearance (one only will be broken when judged) and can be staged decoratively if wished (e.g. nest, basket, straw lined box etc).

- 69. 6 Hens Eggs, any colour(s) (uncooked).

Continued on page 23...



The Talbot Arms

Steve and Wendy Gardner



With a Restaurant, Rooms & a friendly Welcome

En-suite accommodation Bar meals Large garden
Lyme Road, Uplyme, Lyme Regis

www.talbotarms.com, steve@talbotarms.com ☎ 01297 443136

The Gardener's Blacksmith



Local artist blacksmith with a forge on Musbury Farm designing and manufacturing a wide range of garden plant supports, structures such as towers and arches, garden art, fine art original sculptures and limited edition bronzes.

If you have something specific you would like for your garden or outdoor space please contact me and I can help you create a workable design.

jonne@jonne.co.uk www.thegardenersblacksmith.co.uk 07770720373 Unit 1, Musbury Farm, EX138BB

Continued from page 21...

Home Made Wine

All entries must be made by the competitor. In order to promote sustainability, we would actively encourage competitors to engage with the philosophy of “Reduce, Re-Use, Recycle”, and so any commercial markings on bottles will be ignored. However, all re-used material must be clean and hygienic without taint of previous contents, and caps or closures must not be damaged in any way. All bottles should have a label stating the contents, flavour and fruit used to make it.

*Wine classes 70-74 must be exhibited in a clear 750ml bottle (to allow the judge to assess clarity), sealed with EITHER a flanged (easily removed) cork/stopper, OR an appropriate top on a screw-top wine bottle. **Bottles should be filled to leave an air space of between 5-20mm (¼ to ¾ inch) between the wine and the stopper.***

*Sparkling Wine class 75 must be exhibited in an undamaged heavy glass champagne-type bottle with a domed plastic champagne-type stopper, suitably wired. **The air space should be 25-50mm (1-2 inches).***

*Cider class 76 should be in clear or brown glass bottles of 500ml or 1 pint capacity and sealed with a crown cap. **The air space should be approximately 25mm or 1 inch.***

*Liqueurs classes 77 & 78 must be in a clear glass bottle to enable the judge to assess clarity. **The air space should be approximately 12mm or ½ inch.***

70. Red Table Wine (made from grapes or other fruit, suitable for drinking with food).
71. Dry White Wine (made from grapes or other fruit, suitable for drinking with food).
72. Sweet White Table Wine (made from grapes or other fruit, suitable for drinking with food).
73. Rosé Table Wine (made from grapes or other fruit, suitable for drinking with food).
74. Country Wine, from any fruit, vegetable or flower or leaves except grapes.
75. Sparkling Wine.
76. Cider – still or sparkling.
77. Sloe Gin
78. Any other liqueur, eg. fruit brandy, rhubarb vodka, herbal liqueurs etc.
79. Mead

Continued on page 25...

Westcrete

www.westcrete-ltd.co.uk

Celebrating
62^{Years}
1961-2023

Your Local Independent Landscaping & Building Materials Supplier

- Extensive Range of Decorative Gravels
- Competitive Prices on Natural Indian Stone & Porcelain Paving
- Natural Walling & Rockery
- Wide Range of Concrete Paving
- Building Aggregates & Bagged Cement
- Concrete Edgings & Kerbs



- Specialising in small loads from 0.5 – 3.0 cubic metres
- Compact vehicles for easy site-access
- Trade & DIY welcome
- Wide range of mixes available
- Collection service from our Axminster plant from 0.13 cubic metres

sales@westcrete-ltd.co.uk

(01297) 32002 | 35271

Continued from page 23...

Home Produce

All entries must have been made by the competitor.

In order to promote sustainability, we would actively encourage competitors to engage with the philosophy of “Reduce, Re-Use, Recycle”, and so any commercial markings on lids/jars will be ignored. However, all re-used material must be clean and hygienic without taint of previous contents; the judge will look for a seal of preservation and so lids and jars must not be damaged in any way. For pickles, metal lids must have an inner plastic coating. Fruit curds should be in jars with a waxed disc and cellophane lid.

Preserves

- 80. Seville Orange marmalade
- 81. Any other marmalade
- 82. Strawberry jam
- 83. Raspberry jam
- 84. Reduced sugar jam, any flavour
- 85. Jam made from stone fruit
- 86. Any other jam or jelly
- 87. Lemon Curd
- 88. A Fruit Chutney
- 89. A pot of pickled Cucumber
- 90. Elderflower cordial

Honey

- 91. One 454g jar of Set Honey.
- 92. One 454g jar of Clear Honey

Cookery

All entries should be displayed on a white plate and covered with loose clingfilm.

- 93. White Cottage Loaf - not more than 900g
- 94. 4 Seeded brown rolls
- 95. 3 Cheese scones
- 96. Bara Brith
- 97. 3 'Viola' themed shortbreads
- 98. Vegan-friendly fruit cake
- 99. 3 Brownies
- 100. Lemon Drizzle Cake
- 101. Decorated Focaccia
- 102. 5 Wheaten biscuits – no more than 7.5cm diameter
- 103. Fruit loaf made in a breadmaker
- 104. 3 'Viola' themed iced cup cakes
- 105. 3 Flapjacks – any flavour
- 106. Victoria Sandwich, raspberry jam with caster sugar topping
- 107. 5 Baklava
- 108. Pineapple Upside Down Cake
- 109. Recipe from winner of the Cakemaker's Cup in 2022

CARROT LOAF CAKE - see recipe on page 27...



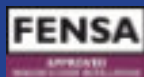
FOR ALL YOUR HOME IMPROVEMENTS

Climax Windows is a family-run company based in Axminster, specialising in the supply and installation of windows, doors, conservatories, cladding, guttering and flat-roof systems.

We have been operating throughout East Devon, West Dorset and South Somerset for over 40 years.



CALL US ON: 01297 35053
WWW.CLIMAXWINDOWS.CO.UK



Recipe for Class 109 - Carrot Loaf Cake

The Cake

- 175 ml sunflower oil
- 3 large eggs
- 200 g light brown sugar
- 300 g grated carrots (peeled weight)
- 50 g chopped walnuts
- Zest of 1 orange
- 200 g self raising flour
- 1 tsp bicarbonate of soda
- 1 tsp mixed spice }
- 1 tsp ground ginger }
- 1 tsp ground cinnamon }
- 1 tsp grated nutmeg } or 3 tsp of mixed spice

The Icing

- 125 g unsalted butter
- 125 g icing sugar
- 1 tsp vanilla extract
- 250 g full fat cream cheese
- lemon /lime zest
- 20 g chopped walnuts

Method

The Cake

1. Preheat oven to 180°C/160°C Fan/Gas mark 4. Grease and line with baking paper a 900g/2lb loaf tin (approx. 13 x 23cm/5 x 9in).
2. Combine and mix lightly the sunflower oil and the eggs in a large bowl and add the sugar.
3. Fold in the grated carrots, walnuts and orange zest.
4. Lightly add the flour, bicarbonate, mixed spice, ginger, cinnamon and nutmeg.
5. Pour the mixture into the tin, and bake in the oven for 1hr 15mins or until a skewer inserted into the middle comes out clean.
6. Cool in the tin for 10 minutes and then cool on a wire rack.

The Icing

1. Beat together the butter and icing sugar until smooth.
2. Add the cream cheese and vanilla and beat to a smooth thick consistency.
3. Decorate the cake with the creamed icing and sprinkle with finely grated lemon or lime zest and the chopped walnuts.



LYME BAY MEDICAL & DENTAL PRACTICES

Lyme Regis Medical Centre, Charmouth Medical Practice & Kent House Health Centre

*Integrated Medical and Dental Care
for all ages*

**Kent House Health Centre
Silver Street
Lyme Regis
Dorset
DT7 3HT**

Telephone: 01297 443399

www.kenthousehealthcentre.org.uk

Craft Section

All exhibits to have been made by the competitor and not have been entered here before. Items made from original designs should be identified as such.

- 110. A greetings card – floral theme – any medium
- 111. Knitting or crochet – any article.
- 112. Embroidered picture – can include cross-stitch.
- 113. A sewn article (hand or machine sewing)
- 114. Jewellery – any medium.
- 115. 3D Viola flower – any medium
- 116. Bunting – any medium. Max length 1m.
- 117. A Painting – floral theme – any medium
- 118. An item made from Wood.
- 119. Any other art/craft article not mentioned above.

Floral Art

*An exhibit is plant material with or without accessories. Natural plant material only may be used, but need not have been grown by the competitor. Entries must be in the name of the competitor who personally arranges them. **Exhibits must comply within size stated.** Table covering white, white bays provided if required. Competitors may use their own drapes.*

*Judging **will not be** to strict NAFAS specifications to encourage creativity and new entrants.*

The Newcomer's Award (Llewellyn White Cup) is restricted to new exhibitors and those who have never won a First Prize in any Floral Art Class at this Society's Summer Show.

Newcomers

- 120. Red, White and Blue

Open Classes

- 121. From the Garden – an arrangement of flowers and foliage in a vase.
- 122. A Mask decorated with flowers and foliage.
- 123. Coronation – not to exceed 45cm x 45cm x 80cm high.
- 124. A Tussie Mussie – not to exceed 25cm x 25cm x 25cm
- 125. Pollinators Delight – an exhibit of flowers, fruit and foliage, not to exceed 30cm x 30cm x 50cm high.



**KITSON &
TROTMAN**

www.ktlaw.co.uk

LEGAL ADVICE AND SERVICES FOR LIFE

- Property • Wills & probate
- Family matters • Business & agriculture
- Dispute resolution • Equine



Lyme Regis 01297442580 | Bridport 01308427436
 Beaminster 01308862313 | Weymouth 01305341400



ARTHUR FORDHAM & CO IRONMONGERS

We are a local, experienced firm established in 1971 who believe in the traditions of a typical hardware store. We have experience working within the tools and hardware industry and are well known for our first class service. We have just about everything you could need for your home.

- Hardware • Key Cutting • Paint Mixing • Plumbing & Electrical Supplies • Household Products
- Gardening Products • Paint and Decorating Sundries • Cleaning Products • Nuts, Screws & Bolts

T: 01297 442 607 | 67 Broad Street | Lyme Regis | DT7 3QF

Photography

Photographs in all classes except the Portfolio (No.132) must be fixed to a white or cream paper/card mount, maximum A5. For Class 132 the maximum space allowed (including any backing board/mounts) is 60 cm x 45 cm. Remember that mounted entries look much better! Mounts must not carry any wording other than an optional title. Class titles may be interpreted freely.

Newcomers Class

Restricted to new exhibitors and those who have never won a First Prize in any Photographic class at this Society's Summer Show

126. The Cobb.

Open Classes

127. Diagonal Lines.
128. Weather.
129. Crowning Glory.
130. Strictly Come Dancing.
131. Viola(s).
132. Circle of Life – a portfolio of four photographs. Max space 60cm x 45cm including mounts

Photography 16 years and under

Photographs to be mounted on A5 card only

133. Shadows.
134. In the Garden.
135. Bugs Life.

Junior Section

Competitors must state age at date of Show. All entries must be the competitor's own unaided work.

YOUNG GARDENERS Age 16 & under

136. 'Look what I've grown' – A Geranium grown from a plug plant and shown in a 12.5cm pot. Plug plant supplied by Groves Nursery

Up to 7 years of age

137. A vegetable print on an A5 card – Coronation theme.
138. A fan decorated with flowers – any medium

7 - 16 years old

139. A Kite – any material/medium. Maximum 50cm in any direction
140. An illustrated Haiku – garden theme
141. A drawing or painting of a Viola(s) A5 size
142. 3 Jam Tarts



Lyme Regis Bookshop

All the latest new books, good reads for the beach, Mary Anning, fossils & dinosaurs, dedicated children's room.

9.30am-5.30pm Mon-Sat
10am-4pm Sun

11, Broad Street, DT7 3QD
www.lymebookshop.com



RL
DOG TRAINING

CANINE HOOPERS

A NEW FUN DOG SPORT FOR ALL
ANY AGE - ANY SIZE - ANY HANDLER
LOCAL GROUP AND 121 CLASSES
RLDOGTRAINING.COM

Family Fun Dog Show

Organised and judged by Ryan Leese of www.rldogtraining.com
Tel 07393 637488 [email: ryan@rldogtraining.com](mailto:ryan@rldogtraining.com)

£1.00 per class - entries taken on the day

Dogs awarded 1st, 2nd and 3rd prize rosettes.

De la Mare Cup for most points in Classes 1 – 7

Raff Bint Cup for Best Trick - Class 8

1.15 pm - Main Arena Registration

2.00 pm - Classes (Registration required)

- 1. Most Fabulous Female.**
- 2. Most Handsome Male.**
- 3. Best Rescue.**
- 4. Golden Oldie (8+ years).**
- 5. Playful Pup (up to 18 months).**
- 6. Dog Most Like its Owner. Fancy Dress Competition. (Please be weather aware)**
- 7. Best Sit and Stay with distractions.**
- 8. Uplyme's Got Talent. Best trick - Performance (max. 1 minute per performance)**

Dog Show Rules:

1. No dogs to be left in cars. 2. No dogs suffering from any illness or have been in contact with any infectious or contagious disease. 3. No bitches in season in the show ground. 4. All puppies must be fully vaccinated and over 4 months of age. 5. Dogs must be on short leads and under control at all times unless under instruction in the ring. 6. Harsh handling not accepted in any class. 7. Judges decision is final. 8. The organisers reserve the right to omit any person or dog from the showground. 9. You must clean up after your dog. 10. The organisers of the show will not be responsible for any loss, damage or injury to persons, animals or property

For your show entry form, please turn to page 42.

Where
Mary Anning
Lived



- Fossils & Fossil Walks
- Mary Anning's Story
- Local history and famous writers
- New volunteers always welcome; if you would like to volunteer please contact us

T: 01297 443370 W: lymeregismuseum.co.uk

THE OLD FORGE FOSSIL SHOP



15 BROAD STREET
LYME REGIS
DORSET DT7 3QE

www.fossilshop.net

info@fossilshop.net

**FOSSILS, MINERALS
JEWELLERY AND GIFTS**

TEL: 01297 445977

Outings 2023

Visitors are welcome on all outings for extra charge of £3
Coach departs Uplyme Village Hall DT7 3UY – pickup from Axminster by prior arrangement. Cost includes a £5 non-returnable deposit.

February 8th (Wednesday) NT Kingston Lacy ‘Snowdrops’ – departs 9.15am
COACH TRIP. Over 40 varieties of snowdrop create a spectacular display. The house resembles a Venetian palace with Egyptian artefacts/paintings. Cafe. NT £14 Non-NT £20.

March 7th (Tuesday) NT Greenway House and Garden – departs 9.15am
COACH TRIP. Agatha Christie’s holiday home with many collections and books. Woodland garden, restored peach house & rare plantings down to the River Dart. NT £14 Non-NT £22

April 4th (Tuesday) Torre Abbey, Torquay – departs 9.15am
COACH TRIP. Torre Abbey dating from 1196 and set in 18 acres of grounds with borders, medieval garden, palm and cactus house, walled garden etc. Cafe. £22 includes house tour.

May 9th (Tues) The Garden House, nr Tavistock – departs 9.15am
COACH TRIP. 10 acres in a tranquil Devon valley, with nearly 6,000 plant varieties. Outstanding naturalistic planting. Tea room & plant sales. £22.

June 6th (Tues) Fursdon House & Gardens – departs 9.15am
COACH TRIP. First stop is Exe Valley Farmshop/Café. Fursdon House - elegant Georgian house dates back 750 years featuring historic family costumes. Gardens with formal and informal planting. £22 includes house tour. 35 places max.

July 13th (Thurs) Kia Ora Gardens/Coldharbour Mill – departs 9.15am
COACH TRIP. Kia Ora -10-acre mature garden with lawns, lakes and ponds. Coldharbour Mill is a working wool museum. Traditional textiles and rugs made on site. £22 includes tour

August 9th (Wed) The Oudolf Field at Hauser & Wirth – departs 9.15am
COACH TRIP. A large perennial meadow with Piet Oudolf’s signature bold drifts of herbaceous perennials and grasses. Walk to Bruton Dovecote and Bruton. £20.

August 23rd (Wed) Bishops Palace & Gardens, Wells – departs 9.15am
COACH TRIP. Stunning moated medieval Palace surrounded by 14 acres of landscaped, RHS partner gardens, with varied planting styles, including a wildflower arboretum and Garden of Reflection. Cafe and shop. £20.

September 12th (Tues) Dartington Trust Gardens & Crafts – departs 9.15am
COACH TRIP. Impressive 26-acre Grade II* listed gardens, with beautiful vistas and sculptures, ancient trees and many plant species. A focus on arts and crafts and locally-sourced food / drink. Restaurant and café. £20 includes guided tour.

October 3rd (Tuesday) Compton Acres – departs 9.15am
COACH TRIP. 10 acres of beautiful gardens/woodland with lovely views over Poole Harbour and the Purbeck Hills. Japanese, Italian, rock, water, and wooded gardens. Tearoom £20.

December 2nd (Saturday) Abbotsbury Sub-Tropical Gardens
COACH TRIP. Evening visit to Abbotsbury Sub-Tropical Gardens Illuminated Trail, details to be confirmed.

For all coach trip bookings, please contact
Jenny Harding, jennyhlyme@hotmail.co.uk or tel. 07773 0604137.



ROSYJEFFERY LTD
 CHARTERED CERTIFIED ACCOUNTANTS

Friendly • Straightforward • Dependable

Call us
**01297
 639457**

Alongside you as your
 accountancy and tax partner

- Annual accounts
- Tax returns
- Tax advice and planning
- Property accountancy
- Business start-up
- Bookkeeping and payroll

Sole Traders Businesses Individuals

The Loft Unit 11 Hunthay Business Park
 Axminster Devon EX13 5RJ

www.rosyjeffery.co.uk



BIG ENOUGH TO HELP | SMALL ENOUGH TO CARE

29 Broad Street, Lyme Regis
01297 443777
enquiries@scottrowe.co.uk
www.scottrowe.co.uk

- **Buying & Selling Property**
- **Wills**
- **Powers of Attorney**
- **Trust & Estate Administration**
- **Family**
- **Personal Injury**
- **Dispute Resolution**
- **Agricultural Issues**
- **Business Issues**
- **Employment**
- **Debt Recovery**



Talks and Other Events 2023

(all events in Uplyme Village Hall DT7 3UY)

Visitors are welcome to all events – at a charge of £3 for talks, socials and visits except as noted.

January 25th (Wednesday) 7.30pm

TALK. 'Heritage Vegetables' by Sally Nex. Garden writer and professional gardener Sally looks at the wonderful history and stories behind our oldest vegetable varieties.

February 11th (Saturday) 10am to 12 noon

COFFEE MORNING. Everyone welcome. Container & tuber for Summer Show potato competition will be on sale for £3.

February 22nd (Wednesday) 7.30pm

TALK. 'The Secret Lives of Garden Bees' by Jean Vernon. Bee addict Jean explores the weird but wonderful world of the bumblebees and solitary bees found in your garden, from buzz pollination to bee robbers. Jean's books on sale.

March 22nd (Wednesday) 7.30pm

DEMONSTRATION. Mark Bugler shows us how to plant up a magnificent spring hanging ball and includes violas – our featured plant this year. Free plug plants available to grow on for the summer show.

April 26th (Wednesday) 7.30pm

TALK. 'Around the World in 80 Plants' by Prof Jonathan Drori CBE. Illustrated talk shows how the worlds of plants are entwined with our history, culture and folklore. Competition for best spring flowering bulbs, corms/tubers in a pot or vase.

May 13th (Saturday) 10am to 12 noon

PLANT SALE & COFFEE MORNING. Please donate plants, garden sundries or home produce (cakes, preserves, eggs, veg) to sell to raise funds to support our events. Entry £2 includes a cup of tea or coffee.

May 24th (Wednesday) 7.30pm

TALK. 'Making a Butterfly Garden' by Martin Young. Martin used to breed butterflies and moths; now he grows the plants that attract them. He looks at how to attract butterflies, moths, hoverflies, ladybirds & bees.

June 28th (Wednesday) 7.30pm

TALK. 'Edible Flowers and Leaves' by Sian Davis of Incredible Edible Flowers. A look at the flowers she grows and the different ways her customers use them.

July 8th (Saturday) 1 till 5pm

SUMMER FLOWER AND PRODUCE FAIR. Competition marquee, artisan stalls, live music, family dog show, games and sideshows, and our ever-popular home-made refreshments. This year's show theme is **Violas**. Entry £3 for all adults.

July 26th (Wednesday) 7.30pm

TALK AND DISPLAY. RNLI Week – 'Snakes Alive' by Dave Marsh of World Life. Proceeds to RNLI. Get a close-up look at these fascinating reptiles. All tickets **£4** from Lyme Regis Lifeboat Shop or ring Brian Cursley 07831 533580.

Continued on page 39...



*Proud supporters of the Uplyme & Lyme
Regis Horticultural Society*

Open daily

tel: 01297 444662

email: info@uplymestores.co.uk

web: www.uplymestores.co.uk

Continued from page 37...

September 27th (Wednesday) 7.30pm

TALK. 'Bulbs that Create Sparkle' by Micky Little, Avon Bulbs. Micky looks at some of the prime examples grown at Avon Bulbs, winners of 30 Chelsea gold medals and entertains us with a few exhibitor tales. Bulbs and plants for sale.

October 7th (Saturday) 10am to 12 noon

AUTUMN SHOW AND COFFEE MORNING. A fun, informal event with classes for produce, flowers, preserves and baking, all judged by public vote. Plant donations for Society stall welcomed. Show open to all, free of charge.

October 25th (Wednesday) 7.30pm

TALK. 'The Wonderfully Versatile Rose' by Michael Marriott. Michael is a world-renowned rosarian, formerly of David Austin Roses. Please note that the charge for non-members is **£5** for this talk.

November 22nd (Wednesday) 7.30pm

AGM followed by **TALK** 'The Art of Dishevelment' by Charles Chesshire. Bridport-based, international garden designer Charles looks at how we interact with our gardens, whether our choice is perfect order or complete anarchy.

December 13th (Wednesday) 7.30pm CHRISTMAS SOCIAL – details to follow.

January 24th 2024 (Wednesday) 7.30pm

TALK. 'Choosing the Right Veg for You'. Joy Michaud of Dorset vegetable seed specialist Sea Spring Seeds shows how to select the best veg varieties to grow for your individual needs.

February 28th 2024 (Wednesday) 7.30pm

TALK by Colin Varndell. 'The Hedgehog Predicament'.

Officers and Committee 2023

President	Rose Mock			
Chair	Joanna Benke-Smith joanna.ulrhs@yahoo.com			
Vice Chairman	<i>vacant</i>			
Treasurer	Alan Vian 07905 034778 vianfamily@gmail.com			
Secretary	Sue Hadcock 01404 831942 suehadcock@hotmail.com			
Membership Secretary	Allison Crabbe 07711 312437 allisoncrabbe@aol.com			
Other Committee				
Tricia Boyd	Toni Green	Jenny Harding	Annie Kobus	Jo Neave

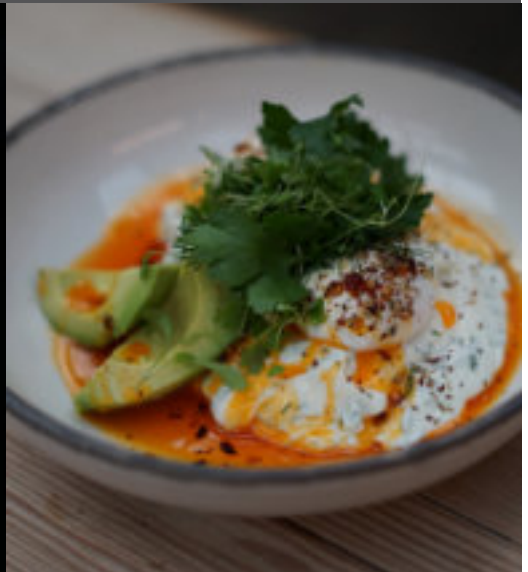


TOWN MILL BAKERY

BAKERY | CAFE | SHOP

COOMBE STREET | LYMEREGIS

WWW.TOWNMILLBAKERY.CO.UK



Plant and Produce Stall at the Show

Every year at the Flower and Produce show we run our own Plant and Produce stall.

Donations of plants and produce for us to sell on at the Show are very welcome.

Uplyme & Lyme Regis Horticultural Society



Plant Sale & Coffee Morning



Saturday 13th May 10am - Noon

Entry £2 includes a cup of tea or coffee

Uplyme & Lyme Regis Horticultural Society

Autumn Show & Coffee Morning

Saturday 7^h October 10am - Noon

Show open to all - free of charge



Uplyme and Lyme Regis Horticultural Society would like to thank all the businesses that have supported the Show by advertising in this schedule or by supplying Tombola /Raffle prizes.

Our thanks to Groves Nurseries, Bridport for providing plug plants to grow on for Classes 32 and 136 and Thursday Cottage for supplying the Jam for our Cream Teas.

The President, Chairman and Committee of the Uplyme and Lyme Regis Horticultural Society would like to thank Robert and Jenny Oldfield, Lois Wakeman and Axminster Printing for their support in producing this Schedule.

Entry Form – Summer Show 8th July 2023

Uplyme & Lyme Regis Horticultural Society

Only one exhibitor per entry form please!

Circle your entries below. Grey shading = junior classes

1	2	3	4	5	6	7	8	9	10	11	12
13	14	15	16	17	18	19	20	21	22	23	24
25	26	27	28	29	30	31	32	33	24	36	36
37	38	39	40	41	42	43	44	45	46	47	48
49	50	51	52	53	54	55	56	57	58	59	60
61	62	63	64	65	66	67	68	69	70	71	72
73	74	75	76	77	78	79	80	81	82	83	84
85	86	87	88	89	90	91	92	93	94	95	96
97	98	99	100	101	102	103	104	105	106	107	108
109	110	111	112	113	114	115	116	117	118	119	120
121	122	123	124	125	126	127	128	129	130	131	132
133	134	135	136	137	138	139	140	141	142		

Total number of Adult entries or Total number of Junior entries

Age of junior (Classes 133 – 142 only)

Exhibitor's Name

Address

Telephone: e-mail:

Please return form to:

Uplyme Stores & Post Office, Uplyme DT7 3UY

or by email to ulrhs.entries@gmail.com.

Closing date is 8pm, Wednesday 5th July 2023.

No late entries will be accepted.

One entry form is required for each exhibitor. You can download additional copies from our website www.ulrhs.wordpress.com or photocopy this page. There is no charge to enter any of the classes. Extra schedules are available from Ginger Beer in Lyme Regis, Uplyme Post Office and Raymonds Hill Post Office.



WBW
SOLICITORS

YOUR LOCAL LEGAL EXPERTS

WBW Solicitors
proud supporters of the

Uplyme and Lyme Regis Horticultural Society 2023 Summer Show

Twelve regional offices, your nearest branches are;
Axminster, Seaton, Chard, Honiton, Sidmouth & Exeter
Visit wbw.co.uk for contact details and to find out about our services.

www.wbw.co.uk

FORTNAM
SMITH & BANWELL

LOOKING FOR A NEW PLACE TO CALL HOME THIS SUMMER?

PLEASE CALL OR EMAIL
FORTNAM, SMITH & BANWELL
FOR ALL YOUR PROPERTY NEEDS

01297445666

lymergis@fsb4homes.com

THE
GUILD
PROPERTY
PROFESSIONALS